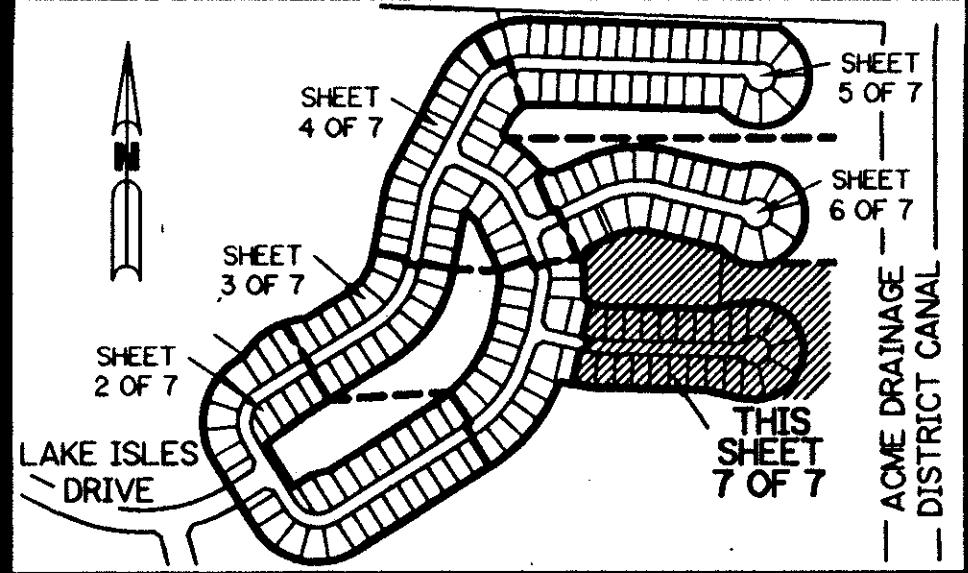


A PART OF THE ORANGE POINT P.U.D.

ORANGE POINT - TRACT "B"

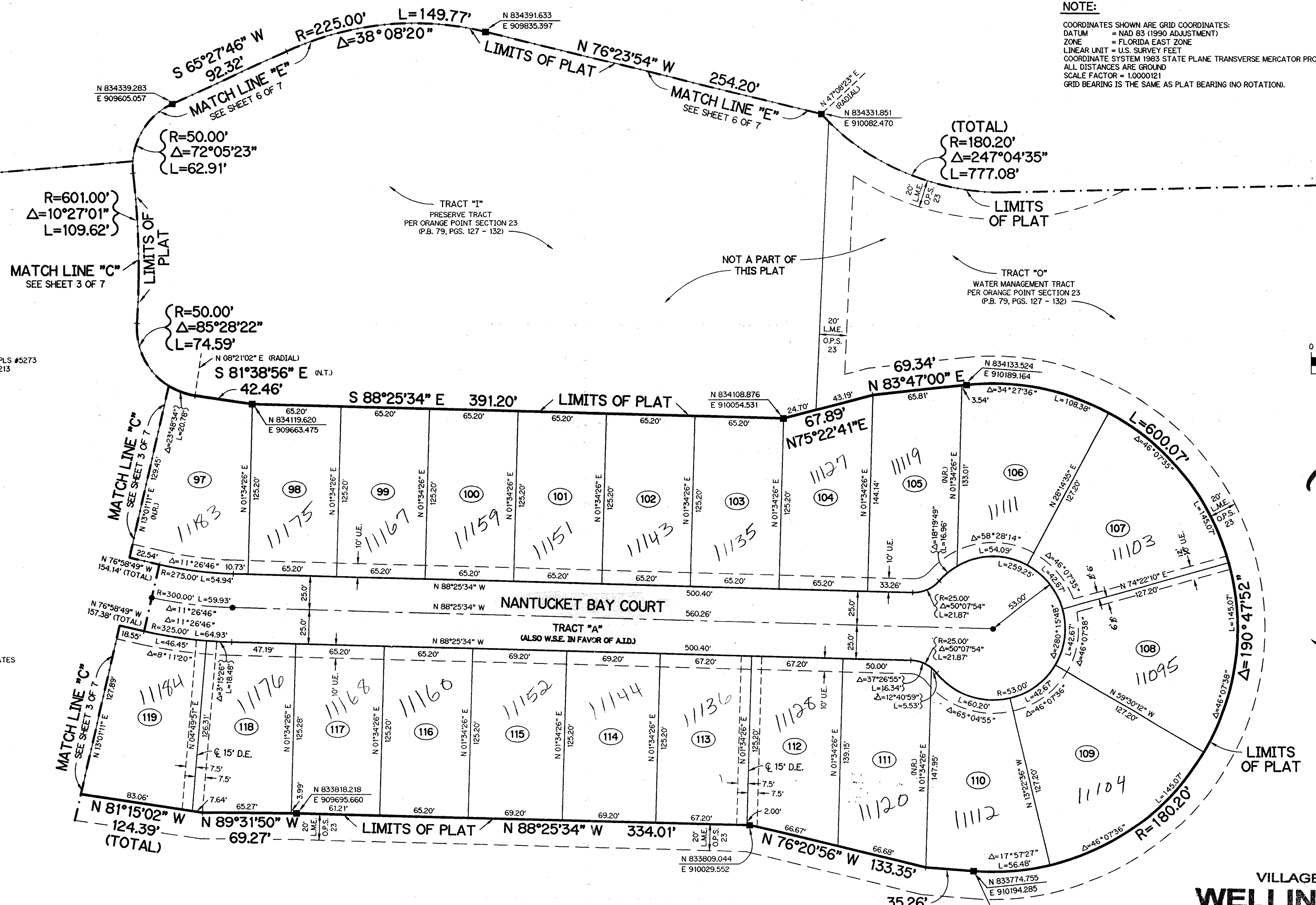
BEING A REPLAT OF ALL OF TRACT "B" ACCORDING TO THE PLAT OF ORANGE POINT SECTION 23 AS RECORDED IN PLAT BOOK 79, PAGES 127 THROUGH 132, INCLUSIVE, OF THE PUBLIC RECORDS OF PALM BEACH COUNTY, FLORIDA. LYING IN SECTION 23, TOWNSHIP 44 SOUTH, RANGE 41 EAST. VILLAGE OF WELLINGTON, PALM BEACH COUNTY, FLORIDA

SHEET 7 OF 7 DECEMBER, 1996

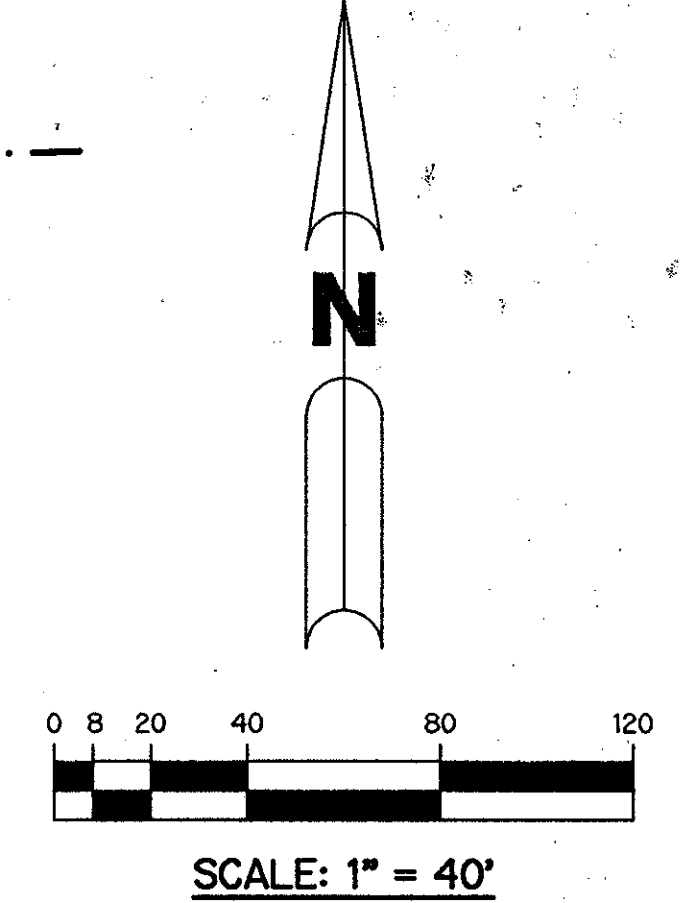


KEY MAP
N.T.S.

NOTE:
COORDINATES SHOWN ARE GRID COORDINATES:
DATUM = NAD 83 (1990 ADJUSTMENT)
ZONE = FLORIDA EAST ZONE
LINEAR UNIT = U.S. SURVEY FEET
COORDINATE SYSTEM 1983 STATE PLANE TRANSVERSE MERCATOR PROJECTION
ALL DISTANCES ARE GROUND
SCALE FACTOR = 1.0000121
GRID BEARING IS THE SAME AS PLAT BEARING (NO ROTATION).



- LEGEND:**
- - FOUND PERMANENT REFERENCE MONUMENT, PLS #5273
 - - PERMANENT REFERENCE MONUMENT, PLS #4213
 - - PERMANENT CONTROL POINT, PLS #4213
 - Δ - DELTA ANGLE
 - A.I.D. - ACME IMPROVEMENT DISTRICT
 - B.E. - BUFFER EASEMENT
 - C.B. - CHORD BEARING
 - C.D. - CHORD DISTANCE
 - ⊕ - CENTERLINE
 - D.E. - DRAINAGE EASEMENT
 - L - ARC LENGTH
 - L.A.E. - LIMITED ACCESS EASEMENT
 - L.M.A.E. - LAKE MAINTENANCE ACCESS EASEMENT
 - L.M.E. - LAKE MAINTENANCE EASEMENT
 - N.R. - NOT RADIAL
 - N.T. - NOT TANGENT
 - N.T.S. - NOT TO SCALE
 - O.E. - OVERHANG EASEMENT
 - O.P.S. 23 - PER ORANGE POINT SECTION 23 (P.B. 79, PGS. 127 - 132)
 - O.R.B. - OFFICIAL RECORD BOOK
 - O.S. - OPEN SPACE
 - P.B. - PLAT BOOK
 - P.C. - POINT OF CURVATURE
 - P.S. - PAGES
 - PLS - PROFESSIONAL LAND SURVEYOR
 - P.S.M. - PROFESSIONAL SURVEYOR AND MAPPER
 - P.T. - POINT OF TANGENCY
 - P.U.D. - PLANNED UNIT DEVELOPMENT
 - R - RADIUS
 - R/W - RIGHT-OF-WAY
 - S.T. - SURVEY TIE
 - T - TANGENT LENGTH
 - U.E. - UTILITY EASEMENT
 - W.S.E. - WATER & SEWER EASEMENT
 - N 737648.0171 E 905258.2326 - DENOTES STATE PLANE COORDINATES



*PET. 84-98
ALLOC. #0001
5/2/4/G*

SUBDIVISION *
BOOK 59
FLOOD ZONE 1008
QUAD # 63
SE 79-883
PUD NAME Wellington

THIS INSTRUMENT PREPARED BY
PERRY C. WHITE, P.S.M. 4213, STATE OF FLORIDA
LAWSON, NOBLE AND WEBB, INC.
ENGINEERS PLANNERS SURVEYORS
WEST PALM BEACH, FLORIDA

TRACT "O"
WATER MANAGEMENT TRACT
PER ORANGE POINT SECTION 23
(P.B. 79, PGS. 127 - 132)

VILLAGE OF
WELLINGTON
14000 GREENBRIAR BLVD.
WELLINGTON, FLORIDA 33414
(561) 791-4000

0284-006

